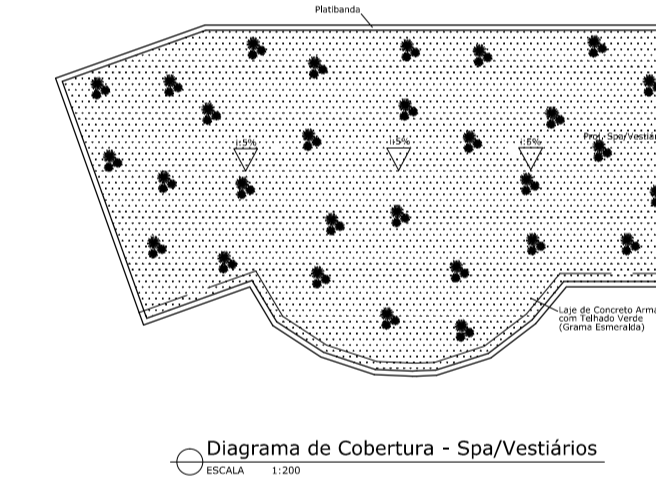
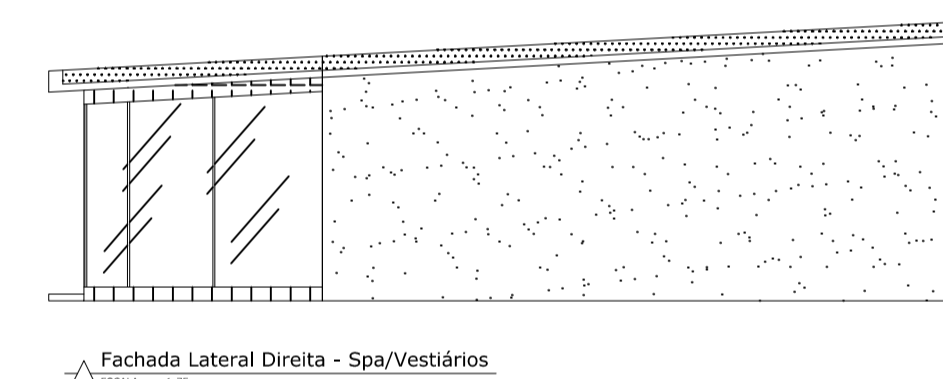
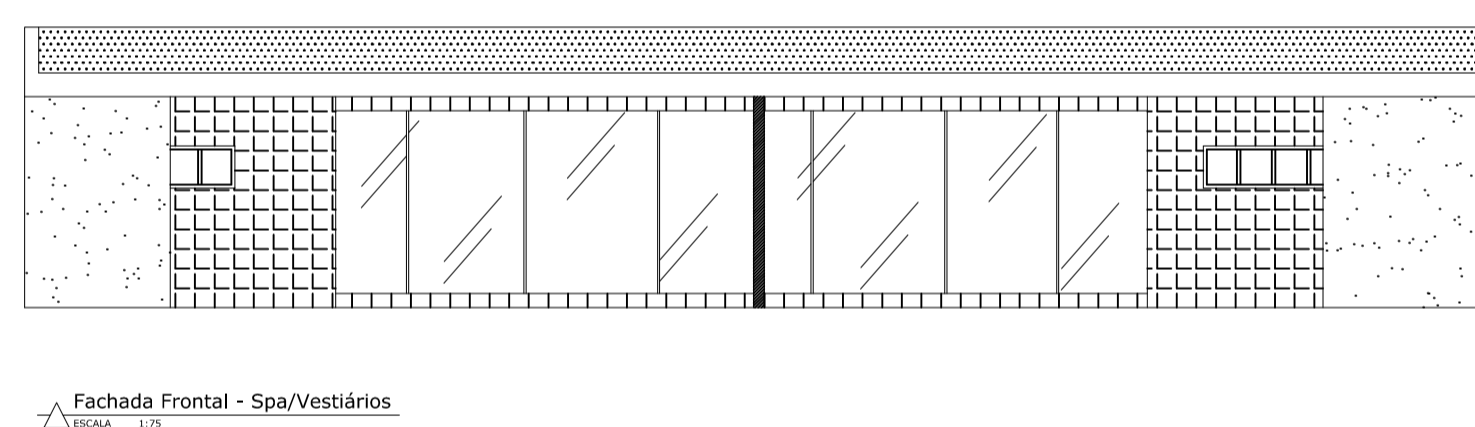
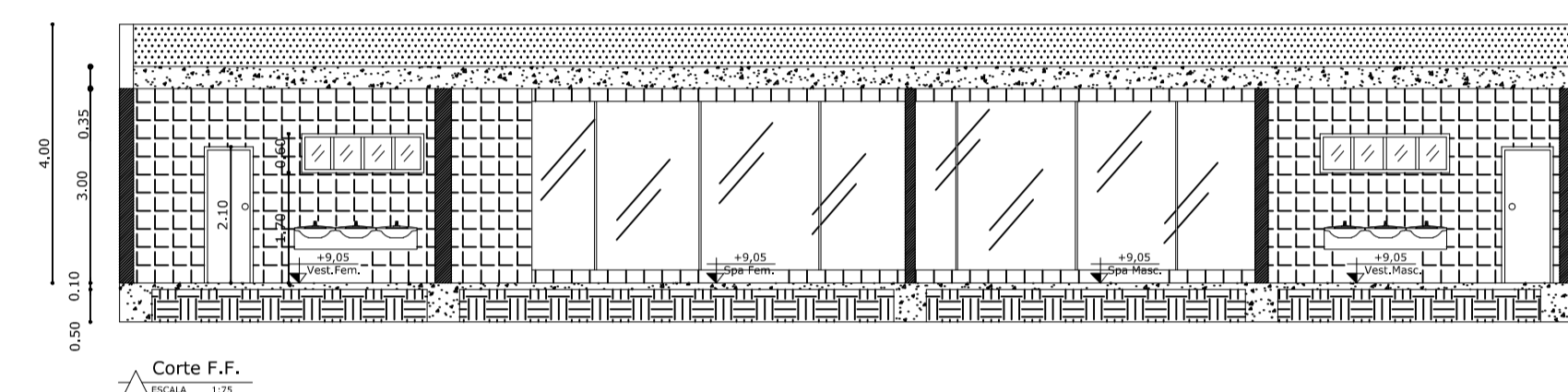
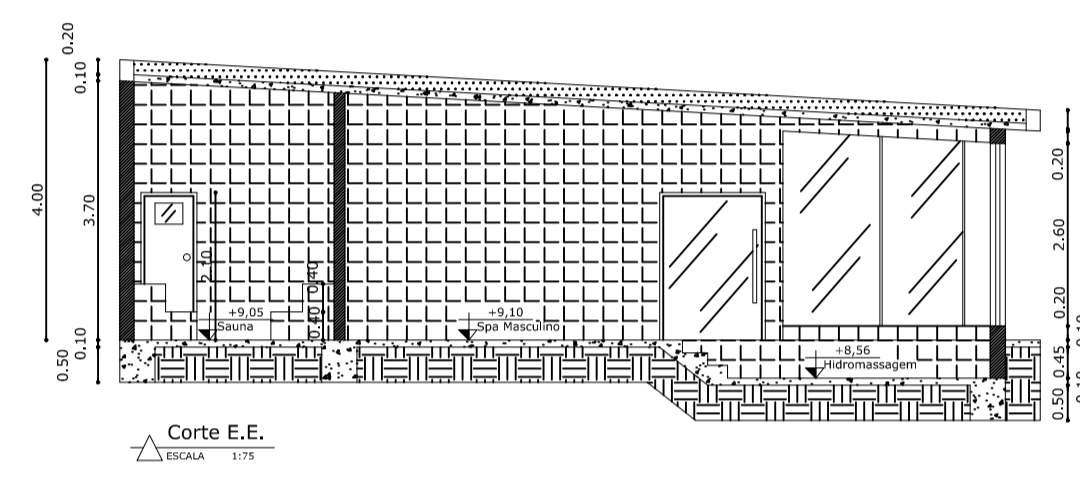
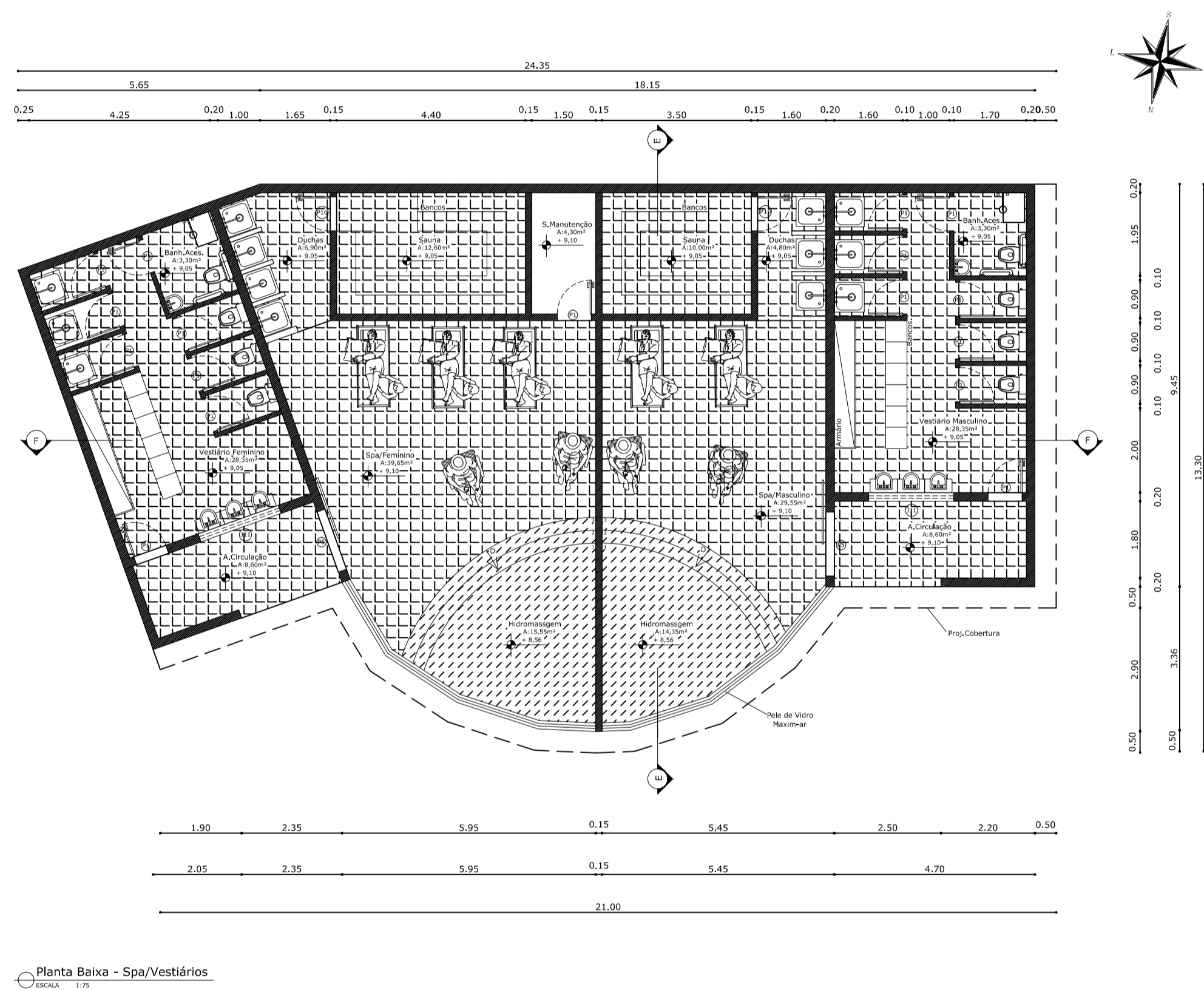


CENTRO UNIVERSITÁRIO DE FORMIGA – UNIFOR/MG
 ARQUITETURA E URBANISMO
 ALUNO: PAULO HENRIQUE DE OLIVEIRA SILVA
 ORIENTADOR PROPOSIÇÃO: PROF. OLÁVIO COSTA NETO
 ORIENTADORA FUNDAMENTAÇÃO: PROF.^a Ma. MARIANNA COSTA MATTOS

POUSADA PENA BRANCA

SPA/VESTIÁRIOS



QUADRO DE ESQUADRIAS PORTAS

ITEM	DIMENSÃO(LxH)	TIPO	MATERIAL
P1	0,80x2,10	Abrir 1 Folha	Madeira
P5	1,50x2,10	Correr 2 Folhas	Vidro
P10	0,80x210	Abrir 1 Folha	Alumínio

QUADRO DE ESQUADRIAS JANELAS

ITEM	DIMENSÃO(LxHxP)	TIPO	MATERIAL
J11	2,00x0,60/1,70	Basculante	Vidro

