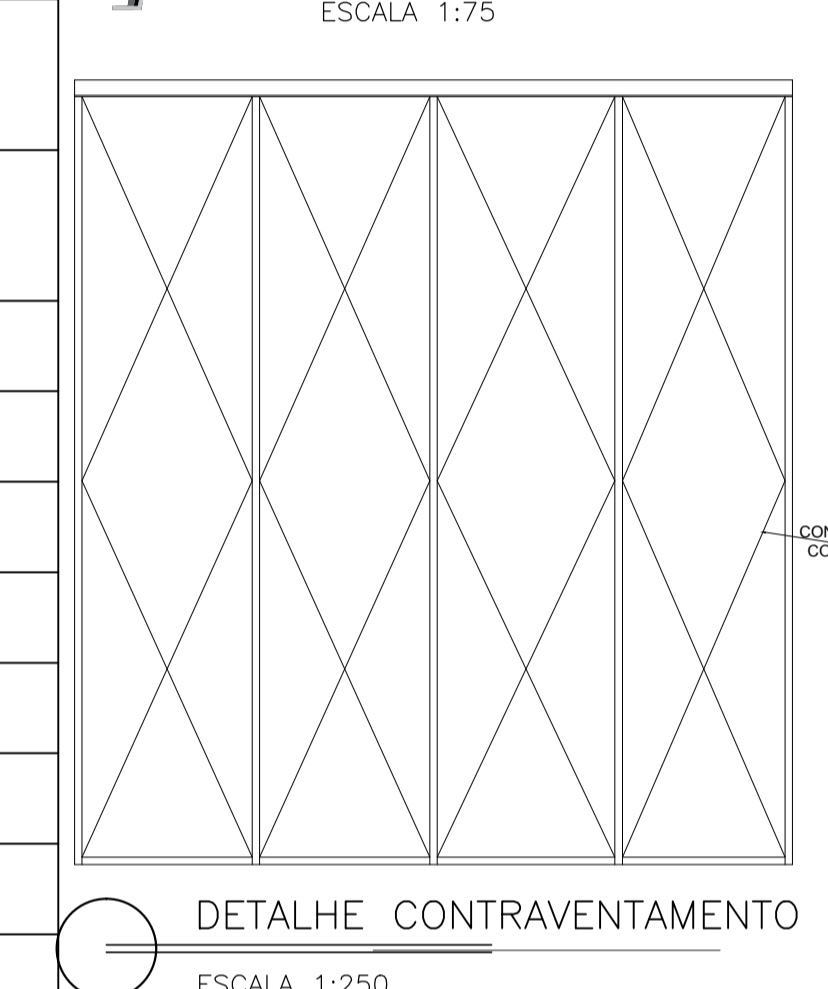
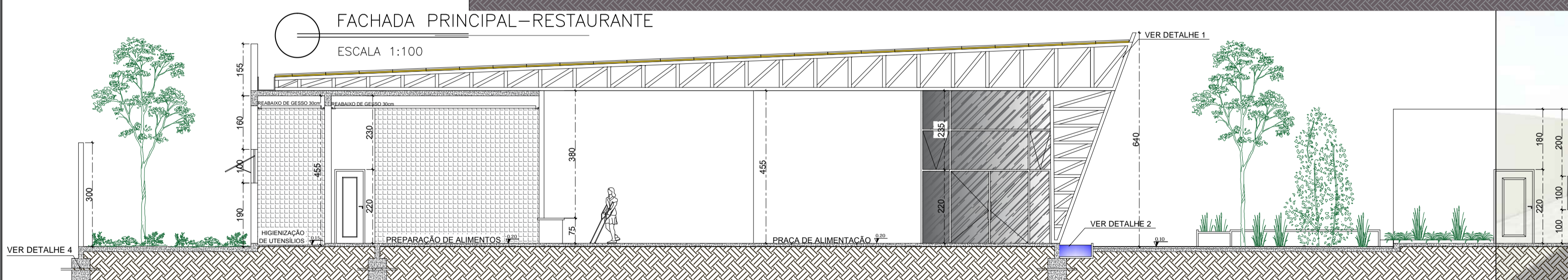
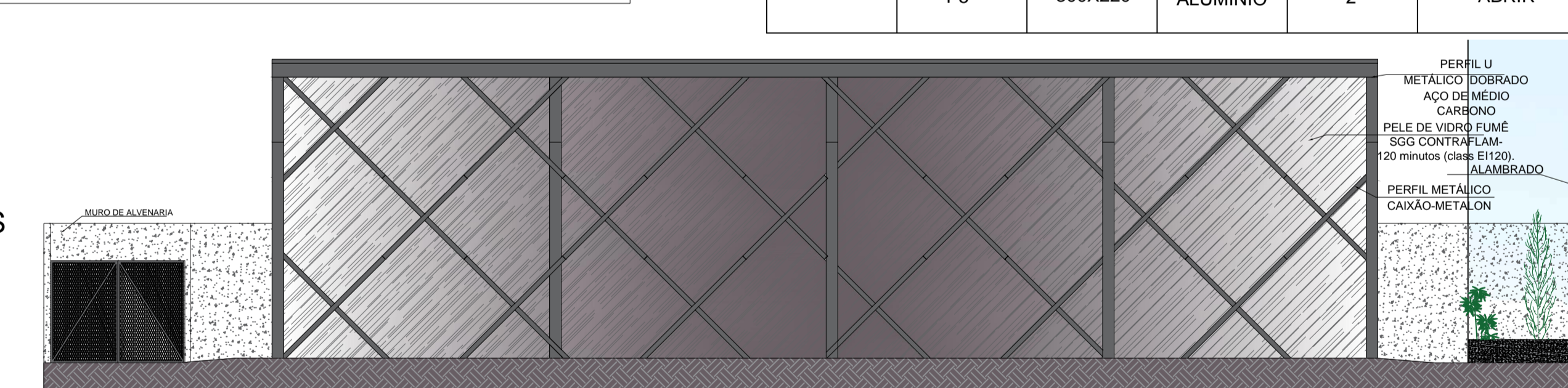
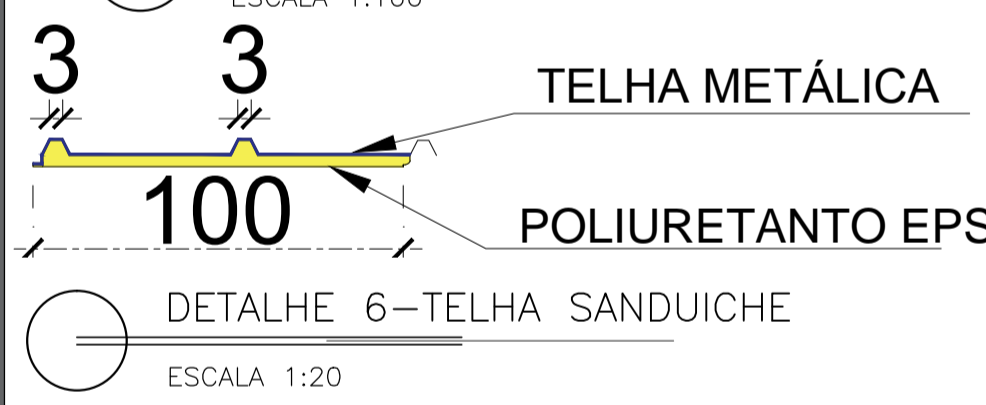


**TABELA DE ESQUADRIAS-RESTAURANTE**

TIPO DE ESQUADRIA	CÓDIGO	DIMENSÕES (cm)	MATERIAL	QNT.	TIPO
JANELAS	J1	100X100X180	ALUMÍNIO	5	MAXIM-AR
	J2	150X100X180	ALUMÍNIO	9	MAXIM-AR
	J3	200X120X100	ALUMÍNIO	2	CORRER
PORTAS	P1	100X220	ALUMÍNIO	2	ABRIR
	P2	100X220	ALUMÍNIO	2	CORRER 1F
	P3	90X220	MADEIRA	10	ABRIR
	P4	200X220	ALUMÍNIO	2	CORRER 4F
	P5	300X220	ALUMÍNIO	2	ABRIR



PLANTA BAIXA-RESTAURANTE  
ESCALA 1:100



CORTE BB-RESTAURANTE  
ESCALA 1:100

