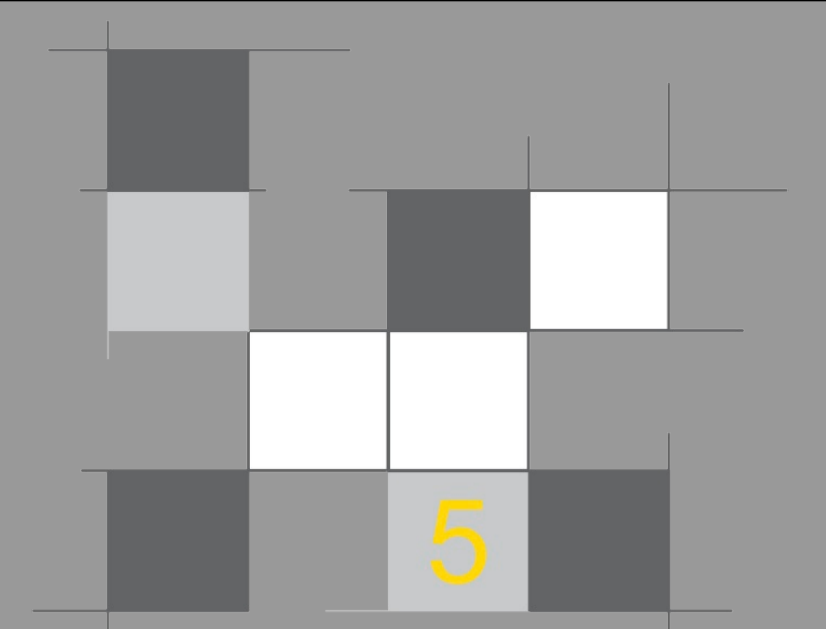
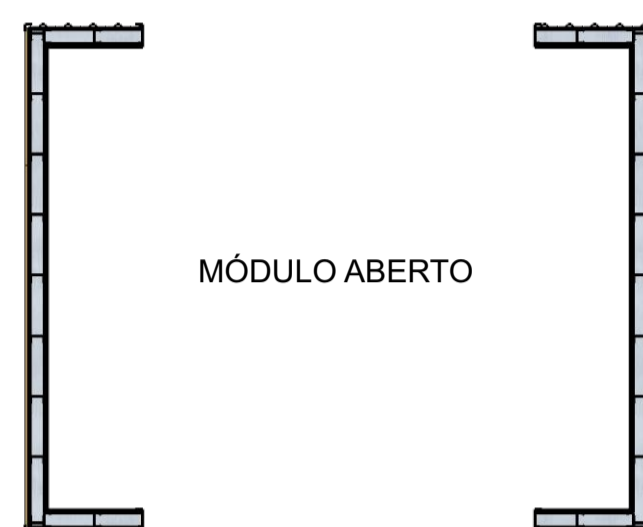
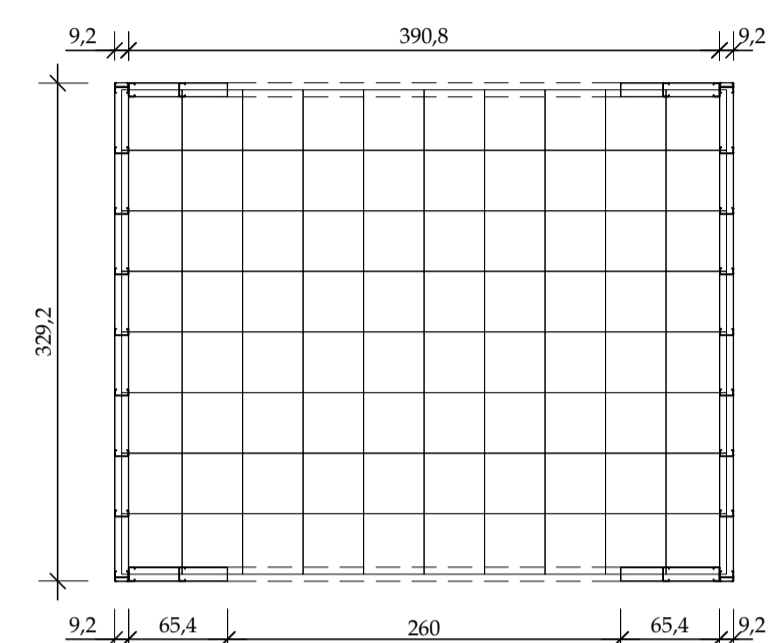
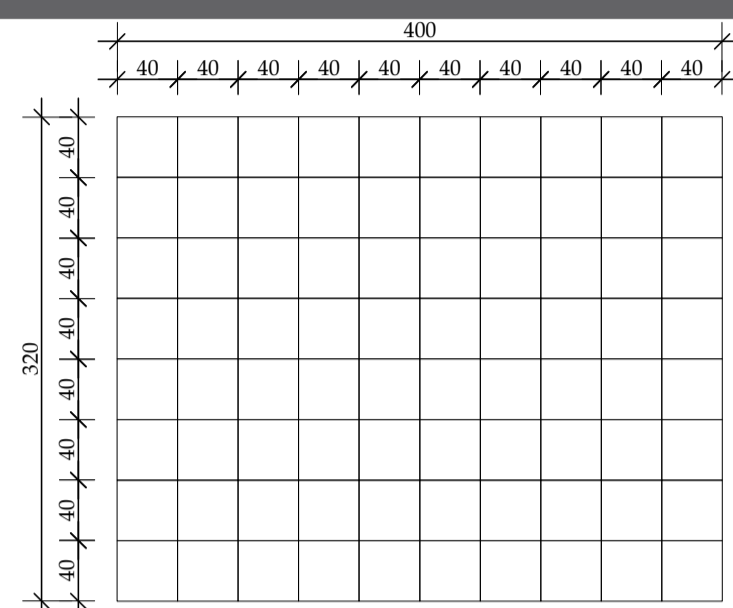


ANÁLISE NA QUALIDADE DA CONSTRUÇÃO CIVIL NA CIDADE DE FORMIGA ATRAVÉS DE CANTEIRO DE OBRAS PLANEJADO

C
Q. M O
D U
L Δ R



MÓDULO ABERTO

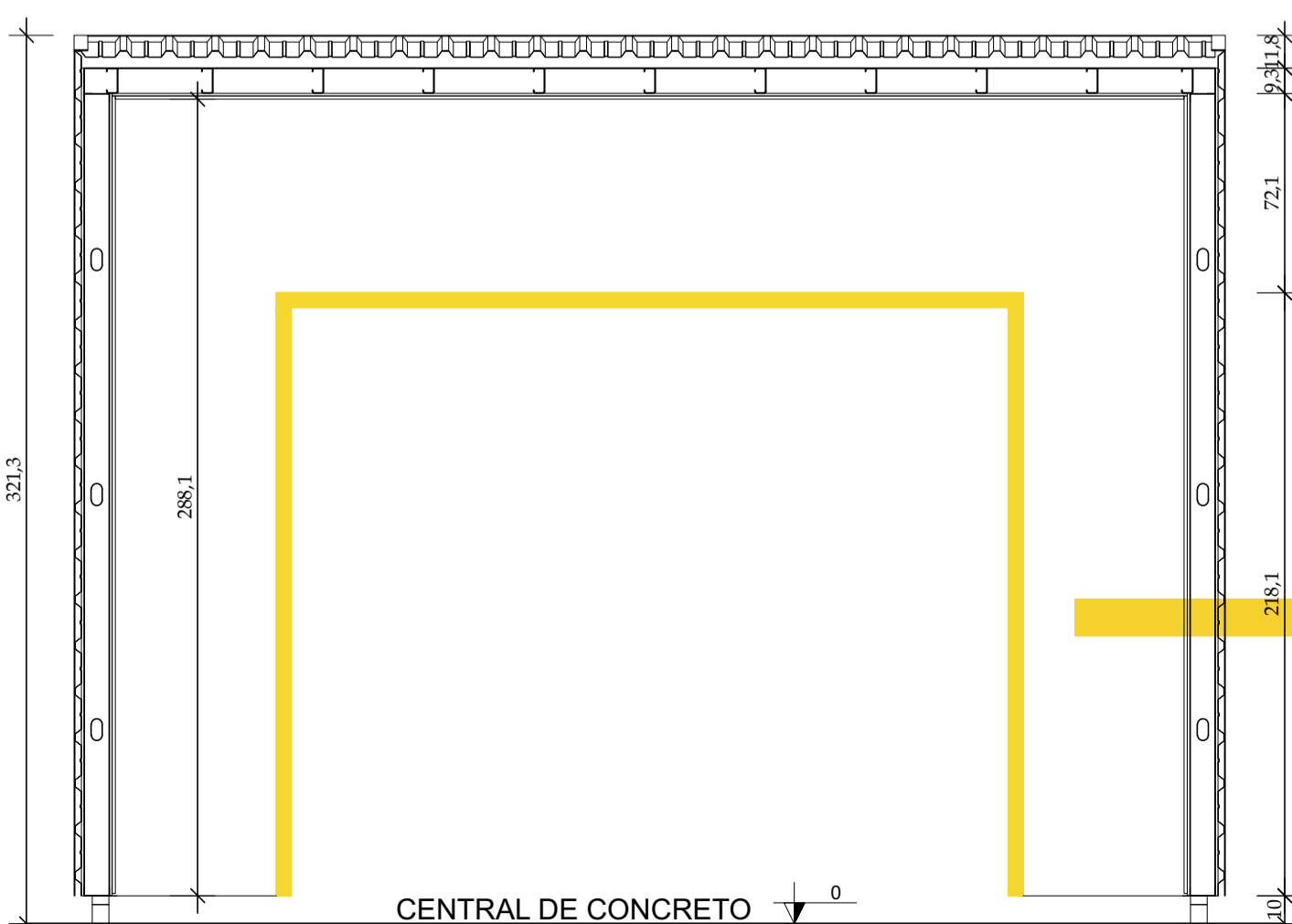


NOTA: O MÓDULO ABERTO PODE SER UTILIZADO PARA A EXECUÇÃO DE ALGUMA ATIVIDADE OU ATÉ MESMO PARA A LAVANDERIA

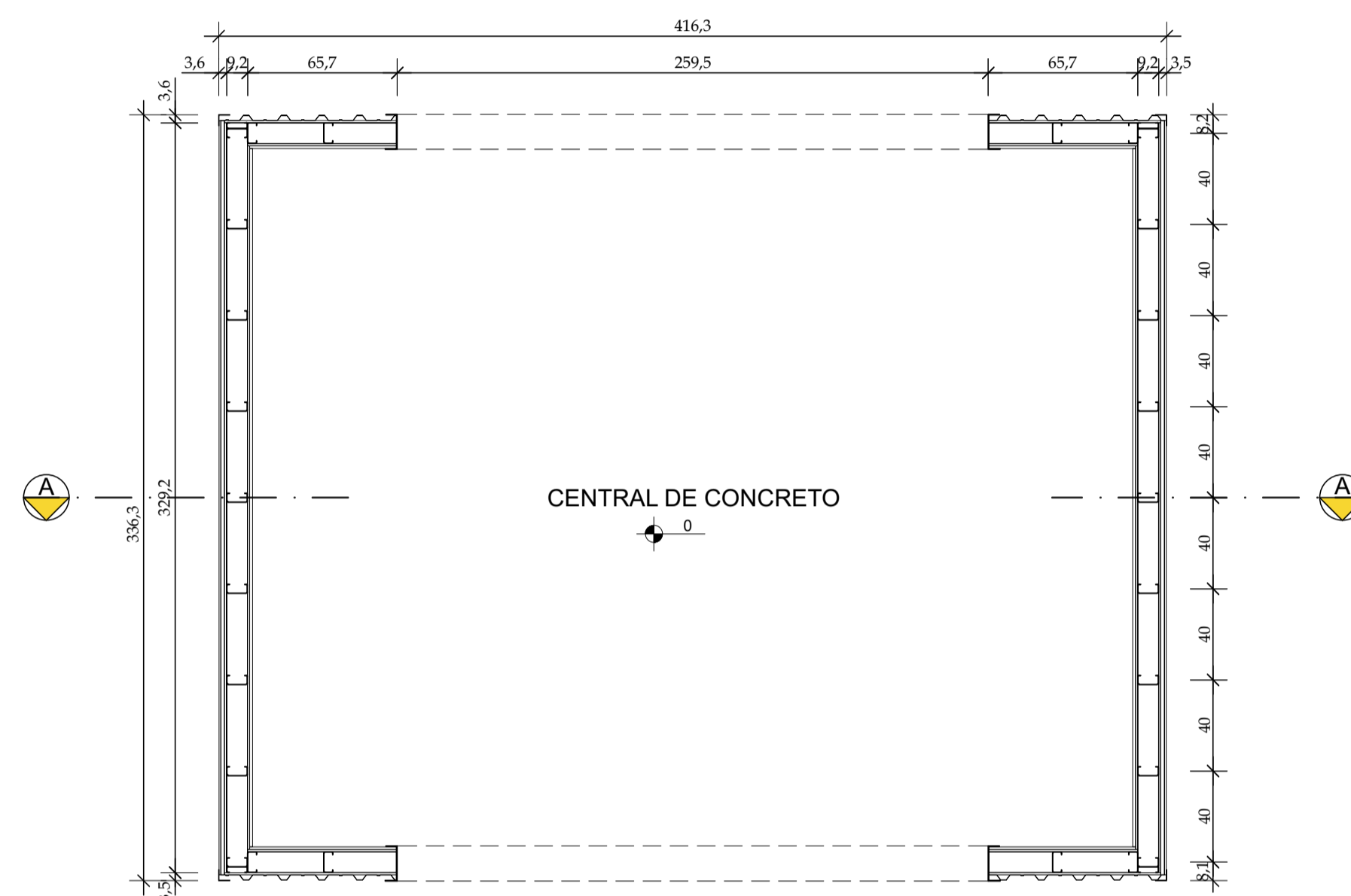
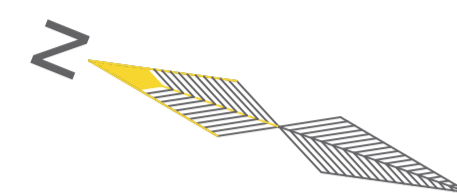
MALHA DA ESTRUTURA | ESCALA 1/50

MALHA COM STEEL FRAME | ESCALA 1/50

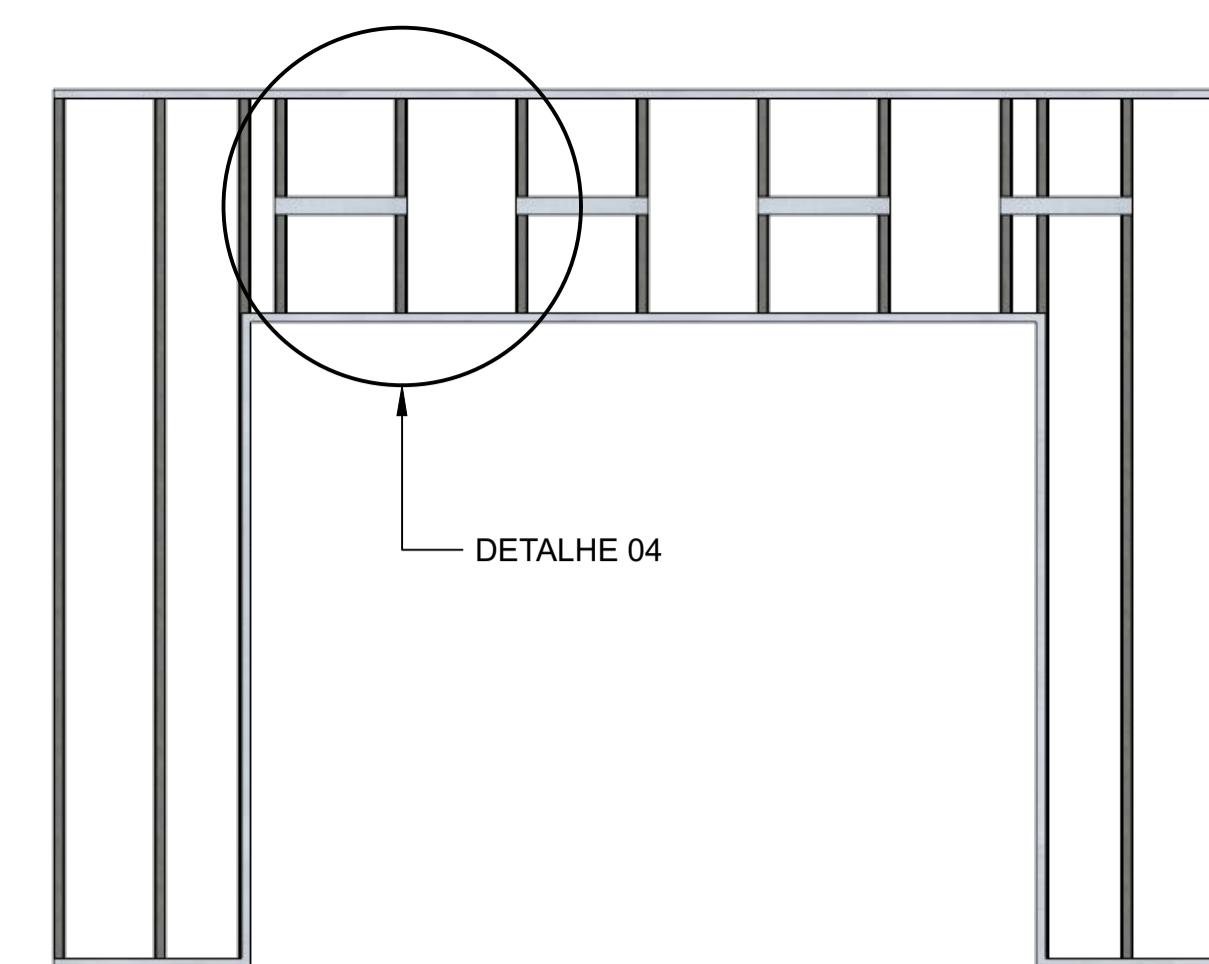
PLANTA HUMANIZADA | ESC. 1/50



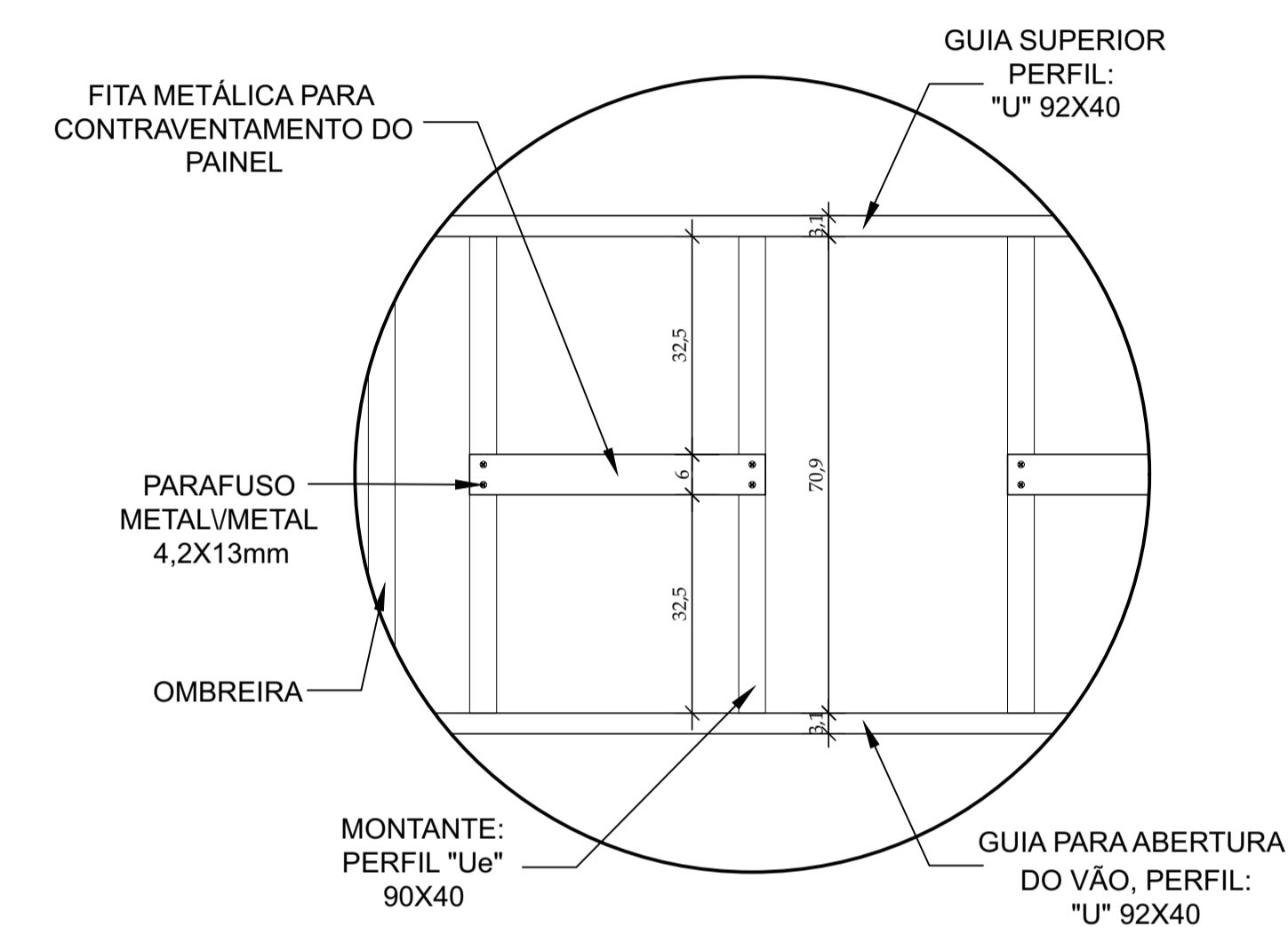
CORTE LONGITUDINAL AA | ESCALA 1/25



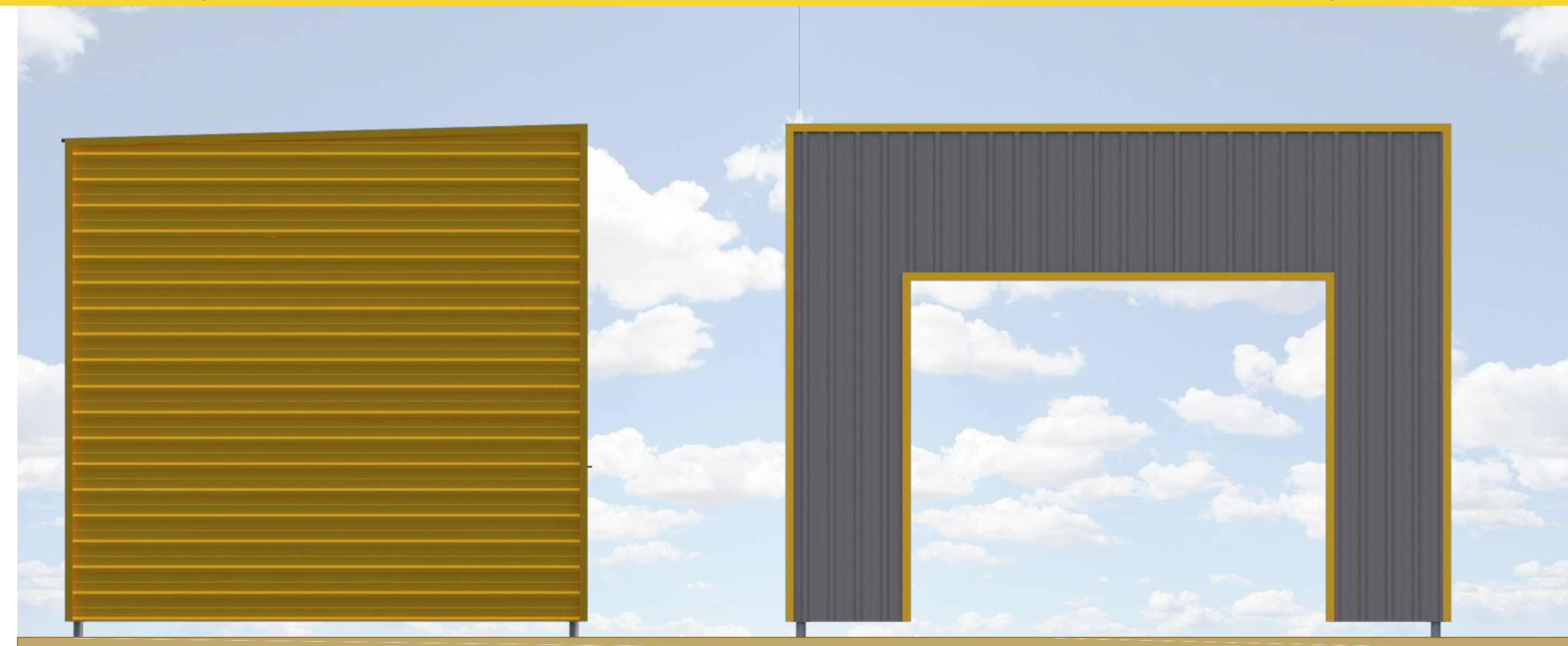
PLANTA BAIXA - MÓDULO ABERTO | ESCALA 1/25



PAINEL COM CONTRAVENTAMENTO | ESCALA 1/25



DETALHE 04: CONTRAVENTAMENTO DO PAINEL | ESCALA 1/10



FACHADA LATERAL | ESCALA 1/25

FACHADA PRINCIPAL | ESCALA 1/25

TRABALHO DE CONCLUSÃO DE CURSO
ARQUITETURA E URBANISMO | UNIFOR - MG | 2017

DISCENTE: EVERALDO A. P. JÚNIOR ORIENTADORA: KARLA C. G. DE CARVALHO