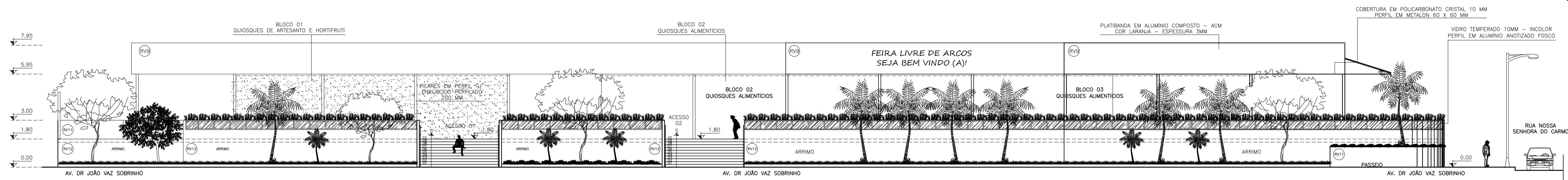
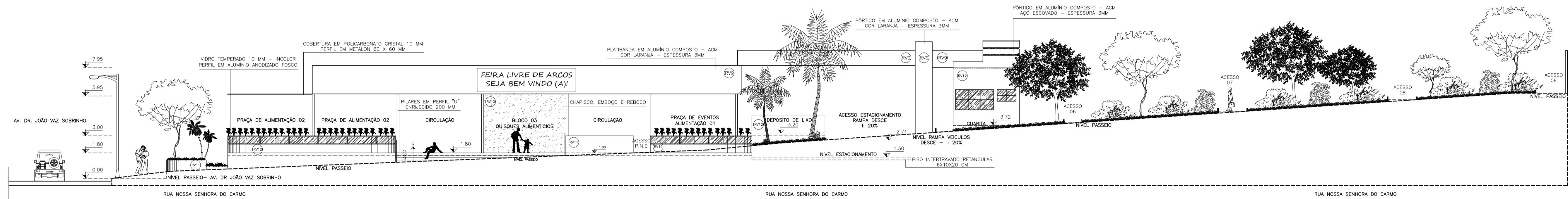


CORTES

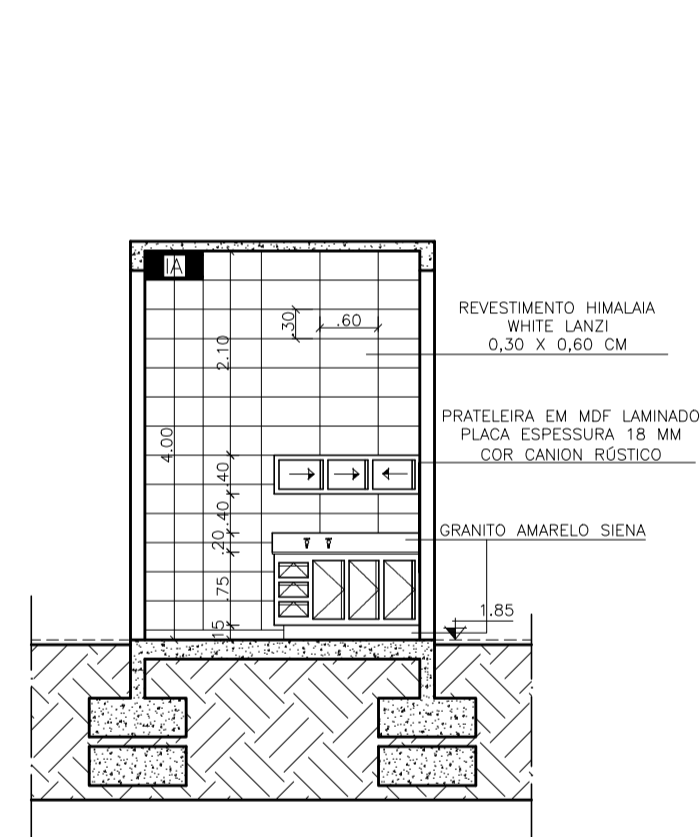
4-6



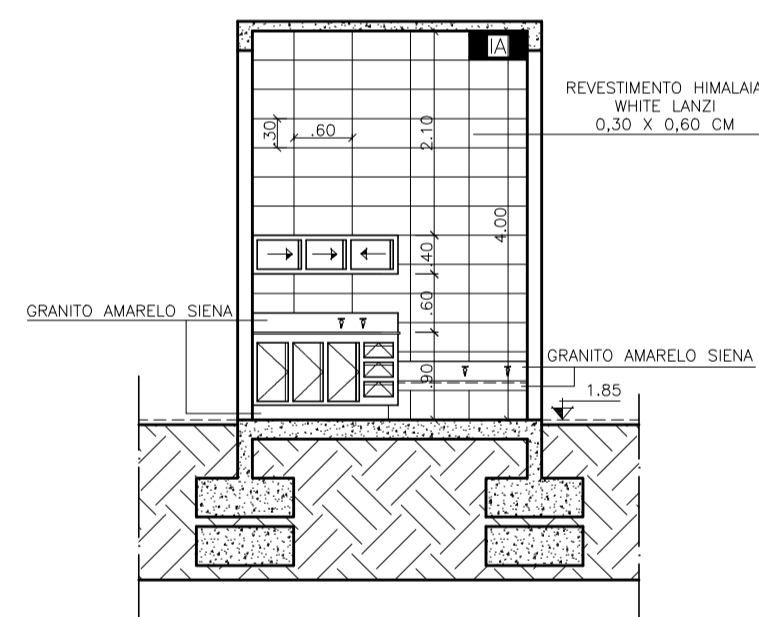
FACHADA PRINCIPAL - AVENIDA DR. JOÃO VAZ SOBRINHO / TRECHO I
 ESC.: 1:150
 C.N.R.: 0.00



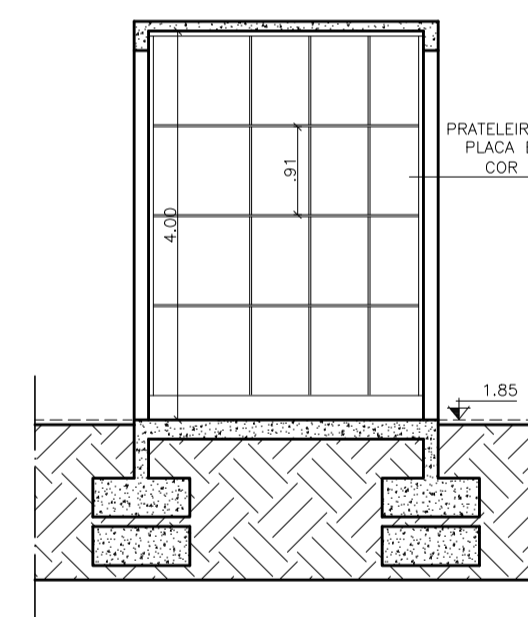
FACHADA SECUNDÁRIA - RUA NOSSA SENHORA DO CARMO
 ESC.: 1:150
 C.N.R.: 0.00



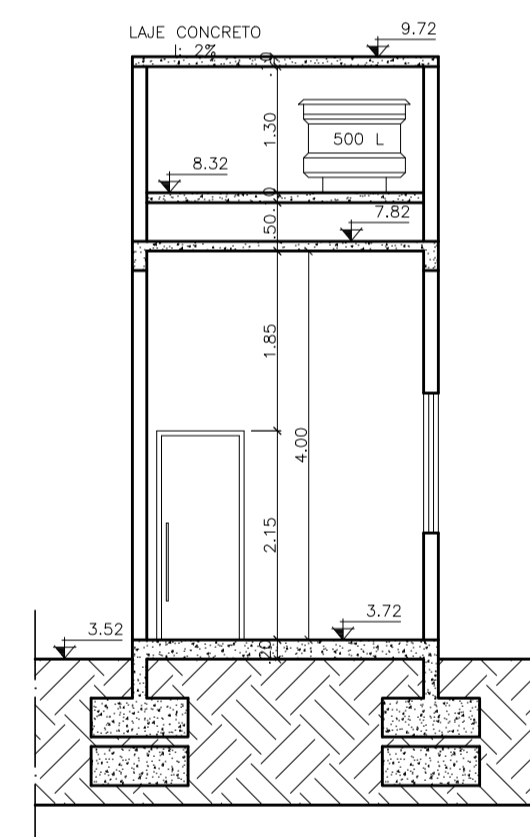
CORTE "AA" - QUIOSQUE ALIMENTICIO
 MODELO PADRAO
 ESC.: 1:75
 C.N.R.: 0.00
 OBS.: VER TABELAS - PAGINA 06



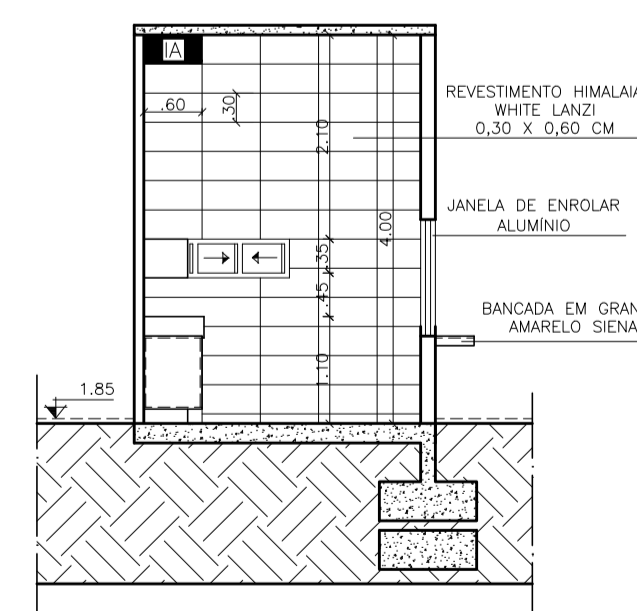
CORTE AA - QUIOSQUE HORTIFRUTI
 MODELO PADRAO
 ESC.: 1:75
 C.N.R.: 0.00
 OBS.: VER TABELAS - PAGINA 06



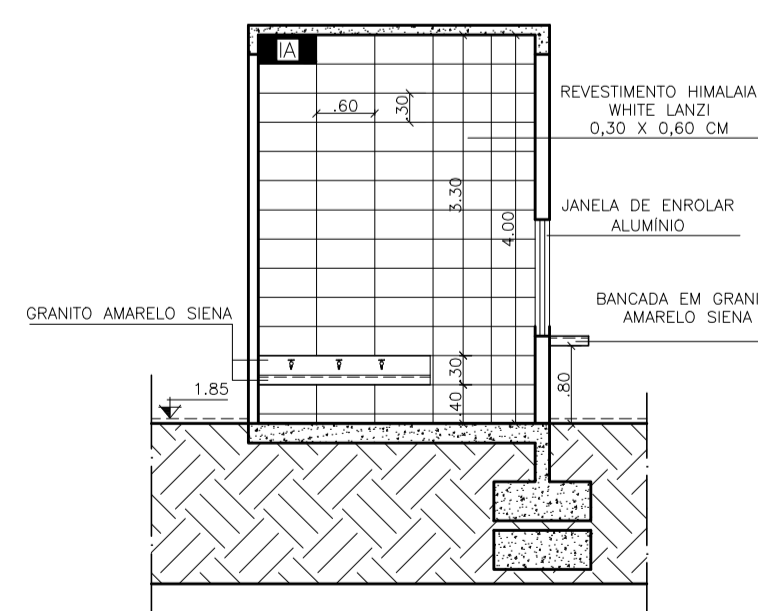
CORTE AA - QUIOSQUE ARTESANATO
 MODELO PADRAO
 ESC.: 1:75
 C.N.R.: 0.00
 OBS.: VER TABELAS - PAGINA 06



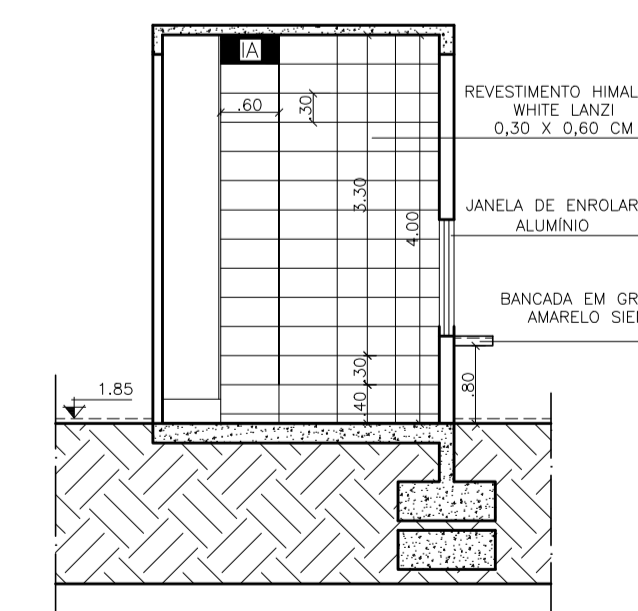
CORTE "AA" - GUARITA E MONITORAMENTO
 ESC.: 1:75
 C.N.R.: 0.00
 ALVENARIA CONVENCIONAL
 OBS.: VER TABELAS - PAGINA 06



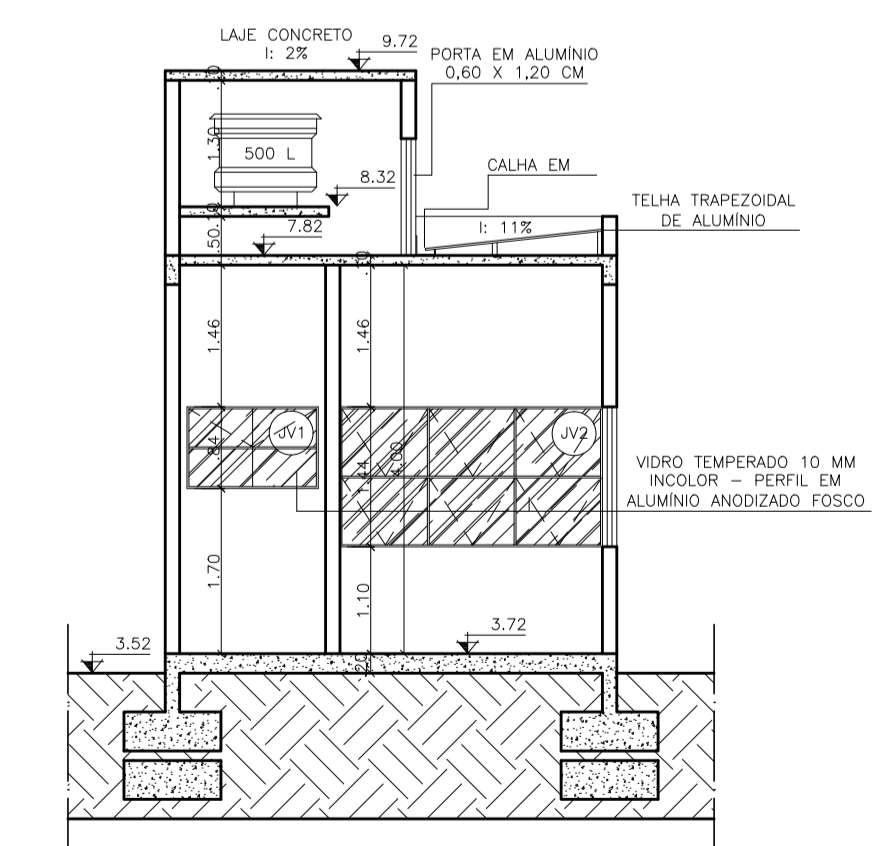
CORTE "BB" - QUIOSQUE ALIMENTICIO
 MODELO PADRAO
 ESC.: 1:75
 C.N.R.: 0.00
 OBS.: VER TABELAS - PAGINA 06



CORTE "BB" - QUIOSQUE HORTIFRUTI
 MODELO PADRAO
 ESC.: 1:75
 C.N.R.: 0.00
 OBS.: VER TABELAS - PAGINA 06



CORTE "BB" - QUIOSQUE ARTESANATO
 MODELO PADRAO
 ESC.: 1:75
 C.N.R.: 0.00
 OBS.: VER TABELAS - PAGINA 06



CORTE "BB" - GUARITA E MONITORAMENTO
 ESC.: 1:75
 C.N.R.: 0.00
 ALVENARIA CONVENCIONAL
 OBS.: VER TABELAS - PAGINA 06

ISABELLA CRISTINA GOMES DE CAMARGOS

- TRABALHO DE CONCLUSÃO DE CURSO - "FEIRA LIVRE: A IMPORTÂNCIA DE UMA NOVA PROPOSTA DE IMPLANTAÇÃO PARA O MUNICÍPIO DE ARCOS/MG"
- ORIENTADORA: MÁRCIA ORDONES LEMOS SALÊH
- CENTRO UNIVERSITÁRIO DE FORMIGA/UNIFOR - MG - 2017